



1983 MAICO SPECIFICATIONS



BRACE YOURSELF! 1983 is the year of the big change for Maico racing machines. Maico – after nearly two years of intensive research – has come up with a tremendously advanced pair of motocrossers.

Realizing the demand for lighter and faster machines, Maico completely re-tooled for the new "Spider" series bikes. This step was not taken lightly and a great deal of thought, engineering innovation and commitment was involved.

The goal was basic: build a genuine works bike and make it available to the public. While it's easy to state a goal, it's a lot harder to get there. To get substantial weight reductions and "factory" type horsepower, the Maico engineering had to literally start with a clean sheet of paper on the drawing board.

New concepts in frame design were achieved, weight was pared off at every point possible without sacrificing strength and the ultimate in state-of-the-art suspension was developed.

After initial development, our International Racing Team assisted in testing and further refinements. When they were satisfied, the bikes were put through the rigors of Grand Prix racing ... with excellent results. Hans Maisch, Walter Gruhler, Mauricio Dolce and Benny Wilken all performed well in the brutal world of European Grand Prix racing.

Long time Maico riders will notice a departure in frame design. A new single down-tube splits into a full cradle, lending incredible rigidity where the engine is mounted to the frame tubes. The heavily stressed regions of the frame are reinforced with ultra-light weight massive gussets. Careful attention was given to advanced angularity for maximum strength. In a word, there are no weak points in the new Spider Type 361 chassis.

A glance at the swing arm shows that it's slimmer and much lighter than last year's box design. Lab testing shows that the new arm (only a little bit heavier than an aluminum arm!) is actually stronger than the old one. Strength was gained by using advanced "bridge sectioning" gusset techniques. This also lends a great deal of lateral strength to the swingarm that did not exist in previous designs.

All things considered, even though the new chassis is lighter, it's worlds stronger. Quite a step forward and one that any racer will appreciate on the track.

Maico engineers completely reworked the rear suspension, with both mechanical improvements and altering the rising rate. A new twin rocker system yields a soft initial ride, but helps resist bottoming out over really bad bumps.

To assist the new design, an Ohlins gas pressurized shock comes as standard equipment on the Spiders. This world class suspension unit has complete adjustability for damping changes, without going inside the shock itself, quite an aid for ever-changing track conditions and rider preference levels.

Heim joints are fitted to the suspension system and grease flow passages are standard equipment, for less maintenance and easier servicing. Less time in the shop means more time on the track.

Up front, the sturdy 42 mm Maico fork tubes have been refined. Adjustability is first rate, with air valve fork caps and a variety of oil levels and types to choose from, depending on track demands and rider needs. A new progressive wound spring gives the rider a soft and plush initial stroke, then firms up properly for the serious bumps.

Both new Spider engines – the 250 and the 490 – are very light and compact. Much weight has been removed compared to the old design. Larger fins can be found on the 250, to allow greater cooling and the use of much more "radical" porting designs.

The new 250 is quick! The power delivery hits harder and the lighter piston lets the revs build **RIGHT NOW!**

A full reed setup is now on the new 490 barrel. This gives even more low end to the already legendary Maico power characteristics. Because of the tremendous increase in low rpm power, four speeds are all the serious racer will need. Our GP racers report that even with the four speed gearbox, first gear is never needed on the tightest turns.

Both engines have the new primary gear drive, replacing the chain system. Housed in the completely new cases, is a new clutch design with a super light clutch pull. Lighter cranks let revs build quicker...and save weight.

A built in safety factor – a rubber cushioned clutch housing on the big bike – helps smooth out some of the awesome power delivery to the balance of the drive train.

Throughout both engines, you'll find stronger and larger bearings, simplified and strengthened parts and a cleanliness of design that shows painstaking work and advanced engineering techniques. Just about the only things a Maico rider will recognize on the new engine are the shift lever and the drain plug!

Maico has not stopped at internal changes alone; the new bikes have a modern, crisp look and a "Spidery" light stance. A red safety seat tops off the brilliant overall red color scheme. **THIS NEW BIKE TRULY STANDS OUT FROM EVERYTHING ELSE AVAILABLE.**

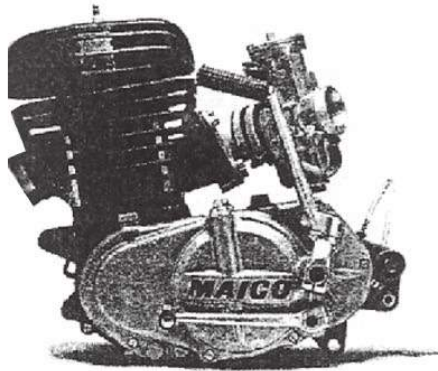
Square side panels are trimmer and fresh plastic can be found everywhere. A new one-piece air box fits cleanly in the frame.

Other details include a lightweight plastic chain guide (one piece!) and a streamlined straight pull rear brake that's half the weight of the 1982 stopper. New Nordisk wheels at both ends are stronger.

With all of the improvements and changes, Maico has still managed to meet their number one goal for 1983: to make the lightest, most effective racing bikes possible.

With a dry weight of 218 pounds for the 250 and 227 for the 490, they are right on target. More power...better power...less weight...better suspension...it's all here, in the new Spider 250 and Spider 490.





TECHNICAL INFORMATION: ENDURO SERIES 1983 - SPIDER E

250 Spider E

Chassis Type 354
Engine Type 253

490 Spider E

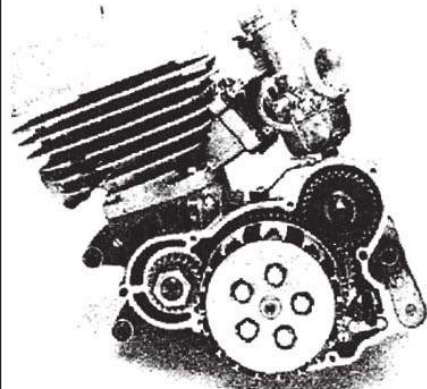
Chassis Type 354
Engine Type 254

Max. length	2190mm(86.22")	
Max. height	1290mm(50.78")	
Max. width	850mm(33.5")	
Wheel base	1510mm(59.45")	
Seat height	960mm(37.8")	
Ground clearance	372mm(14.64")	
Dry weight	107kg (238 lbs)	109kg (240 lbs)
Intake system	Reed valve intake	Reed valve intake
Exhaust system	Air cooled two stroke with loop scavenging.	Air cooled two stroke with loop scavenging.
Bore & stroke	67 x 70mm	86.5 x 83mm
Displacement	247ccm	488ccm
Compression ratio	12:1	12:1
Carburetor	Bing type V54/2.1 Ø38mm	Bing V54/2.2 Ø40mm
Horse power (DIN)	29.4kw (40 hp) @8000 RPM	39kw (53 hp) @7000 RPM
Fuel	High octane, (92+), oil mix 20:1 Bel-Ray MC3, 40:1-50:1 Bel-Ray MC1 + or 2 stroke oil with recommended mix.	
Intake system	Large volume foam filter in large air box	
Exhaust system	High pipe with removable high performance aluminum spark arrestor/muffler.	
Ignition	Pointless Thyristor Motoplatt with lighting coil	
Ignition timing (BTDC)	1.6 ± 0.1mm	2.1 ± 0.1mm
Spark plug	Champion M2 or M84G, NGK B9ES	
Clutch	Multiplate, oil bath clutch with 6 (steel) and 6 (steel) plates.	
Primary ratio	41/18 = 2.28	39/21 = 1.86
Final drive ratio	52/14 = 3.71	52/14 = 3.71
	Optional sprockets 12T, 13T, 15T, optional gear wheel sprocket 54/156T.	
	Dog shifting, 5 speed gear box with mainshaft, layshaft and drive countershaft. With 3 shift forks, shifting plate operated through shifting cam with engaged hooked ratchet, left foot operated.	
Gear Ratios	250 Spider E	490 Spider E
Type of Gear	GT1	GT1
	Internal (Overall)	
1st Gear	2.98(25.2)	2.98(20.6)
2nd Gear	2.17(18.36)	2.17(14.9)
3rd Gear	1.65(13.95)	1.65(11.4)
4th Gear	1.25(10.6)	1.25(8.6)
5th Gear	1.00(8.45)	1.00(4.9)
Gear lube	SAE 20W-50 motor oil-800 cc	
Primary chain	52 links, 2 single row individual chains.	
Drive chain	3/8 x 7/32 5/8 x 1/4" 112 links	5/8 x 1/4" 112 links
Front wheel travel	310mm (12.2")	
Spring, damping	Double loop chrome-moly tubing. Center shock frame. Hydraulic telescopic forks with Ø42mm fork tubes. Aluminum fork sliders, progressive operating dampers, progressive wound spring, compressed air.	
Oil capacity	Progressive wound spring - additional air pressurized (10-14 psi). Hydraulic damper with rebound spring.	
Steering head	Approximately 535cc hydraulic oil per leg HL25 or AFT (SAE 10) Bel-Ray LT100 or LT200. Oil level measures 16cm from the top of the fork tube.	
Rear suspension	Covered tapered roller bearings. Play free. Adjust without tension.	
Rear wheel travel	Swingarm mounted with needle bearings and sealed by O-rings. Pressurized reservoir Ohlins gas shocks with floating piston in reservoir. Length 474mm (18.66"). Ohlins gas center shock with adjustable rebound damping.	
Front brake	325mm - (12.8") Drum brake - 138 Ømm. Brake shoes 25mm wide. Operated by right hand.	
Rear brake	Drum brake - 160 Ømm. Brake shoes 30mm wide. Operated by right foot.	
Front tire	3.00 x 21	
Rear tire	4.50 x 18	
Tank	Centrifugal molding plastic tank 13.25 lit. (3.5 gal)	
Color	Spider red (frame, tank, fender, side panels).	
Headlight	35 watt/12 volt	
Brake light	24W/12V	
Tail light	6W/1V	

Technical specifications are subject to change without notice.



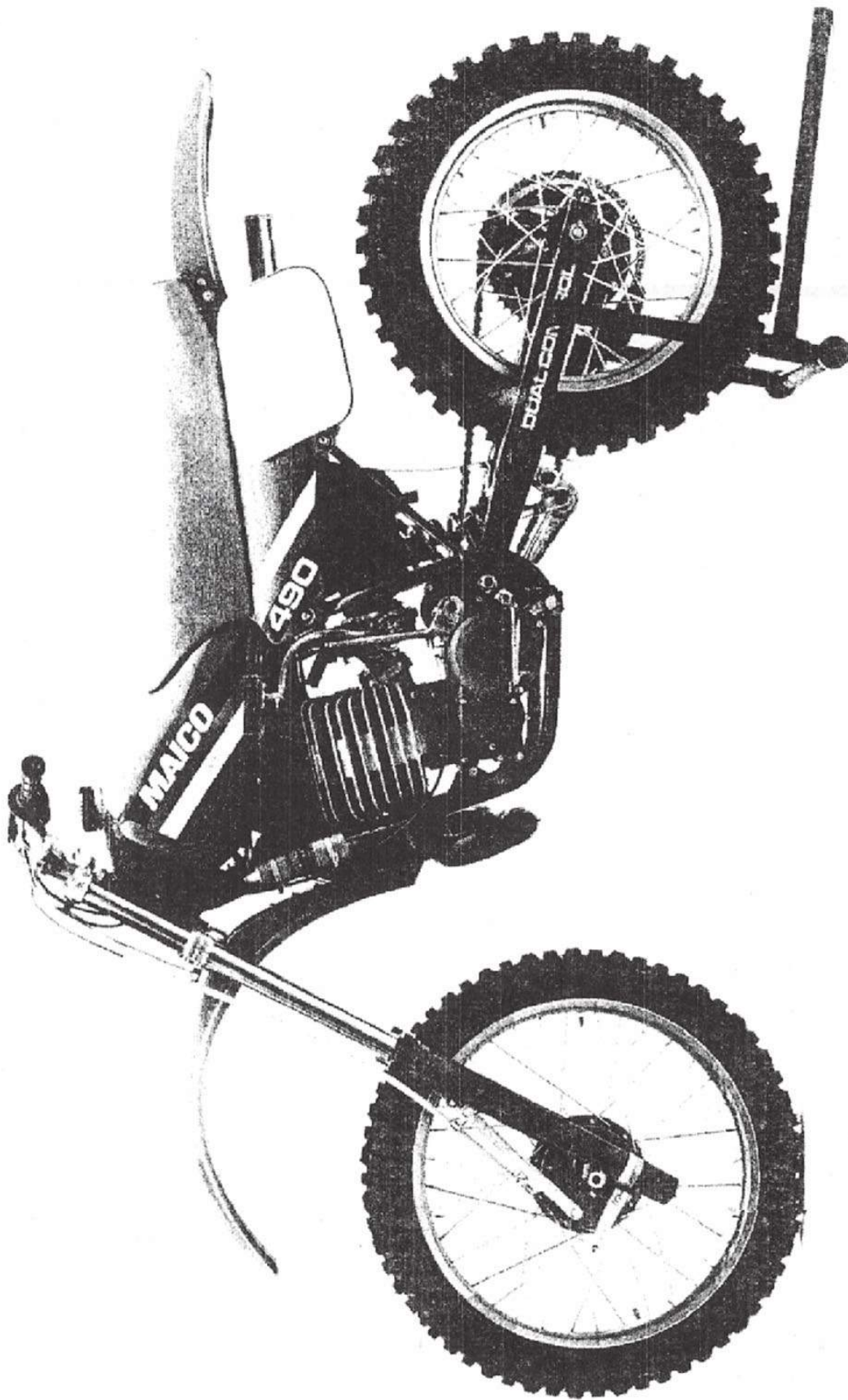
TECHNICAL INFORMATION: MOTOCROSS SERIES 1983 - SPIDER



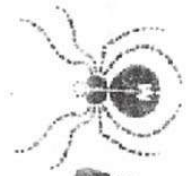
	Chassis Type 361 Engine Type 361	Chassis Type 361 Engine Type 362
Max. length	2175mm(85.62")/2210mm(87")	
Max. height	1250mm(49.21")	
Max. width	850mm(33.5")	
Wheel base	1490mm(58.66")/1530mm(60.23")	
Seat height	1020mm(40.15")	
Ground clearance	372mm(14.64")	
Dry weight	99kg(218 lbs)	103kg(227 lbs)
Bore & stroke	Reed valve intake Air cooled two stroke with loop scavenging 67 x 70mm	86.5 x 53mm
Displacement	247ccm	488ccm
Compression ratio	12:1	12:1
Carburetor	Bing type V54/2 Ø38mm	Bing V54/2 Ø40mm
Horse power (DIN)	31kw (42 hp) @8000 RPM	41kw (55 hp) @6800 RPM
Fuel	High octane, (92+), oil mix 20:1 Bel-Ray MC3, 40:1-50:1 Bel-Ray MC1 + or 2 stroke oil with recommended mix.	
Intake system	Large volume foam filter in large air box.	
Exhaust system	High pipe with removable high performance muffler.	
Ignition	Pointless Thyristor - Ignition (MHKZ), Motonist	
Ignition timing (BTDC)	0.4 ± 0.1mm	2.0 ± 0.1mm
Spark plug	Champion M2 or NGK B9ES	
Clutch	Multiplate, oil bath clutch with friction clutch plates	Cushion drive clutch housing.
Primary ratio	69/24 = 2.28	66/31 = 2.13
Final drive ratio	52/14 = 3.71 Optional sprockets 12T, 13T, optional rear wheel sprocket 56T/54T.	52/14 = 3.71
Shifting	Dog shifting 5 speed gear box with mainshaft, and output shaft. With 3 shift forks, shifting drum operated through shifting cam with shifting ratchet. Left foot operated.	Dog shifting 4 speed gear box with mainshaft, and output shaft With 2 shift forks, shifting drum operated through shifting cam with shifting ratchet. Left foot operated.
Gear Ratios:	250 Spider	490 Spider
Type of Gear	C Internal (Overall)	FL FK
1st Gear	2.07(22.07)	2.07(16.34) 2.07(16.34)
2nd Gear	1.61(17.20)	1.56(12.30) 1.56(12.30)
3rd Gear	1.24(13.22)	1.19(9.41) 1.24(9.79)
4th Gear	1.04(11.14)	0.96(7.58) 1.00(7.91)
5th Gear	0.88(9.40)	
Gear lube	SAE 20W-50 motor oil-650cc	
Primary drive	Straight cut gear drive	
Drive chain	5/8 x 1/4" 118 links	5/8 x 1/4" 118 links
Front suspension	Single loop chrome - moly tubing divided into 2 lower down tube single shock frame. Hydraulic telescopic forks with 42mm fork tubes. Aluminum fork sliders, progressive operating dampers, progressive spring, with compressed air.	
Front wheel travel	310mm(12.2")	
Spring, damping	Progressive wound spring - additional air pressurized with 10-14 psi. Hydraulic damper with rebound spring.	
Oil capacity	Approximately 535 cc hydraulic oil per leg. HL 25 or AFT (SAE 10) Bel-Ray LT100 or LT200. Oil level measures 16cm from top of the fork tubes.	
Steering head	Covered tapered roller bearings, play free. Adjust without tension.	
Rear suspension	Dual control suspension. Swingarm mounted with needle bearings and sealed by o-rings.	
Rear shocks	Pressurized reservoir Ohlins gas shocks with floating piston in reservoir. Length 474mm (18.66"). Spindle travel 100mm. Adjustable rebounding damping.	
Rear wheel travel	325mm (12.8")	
Front brake	Drum brake - 136 Ømm. Brake shoes 25mm wide. Operated by right hand.	
Rear brake	Drum brake - 160 Ømm. Brake shoes 30mm wide. Operated by right foot.	
Front tire	3.00 x 21	
Rear tire	4.25 x 18	
Tank	Centrifugal molding plastic tank. 9.5 lit. (2.5 gal)	
Color	Spider red (frame, tank, fenders, side panels)	

Technical specifications are subject to change without notice.





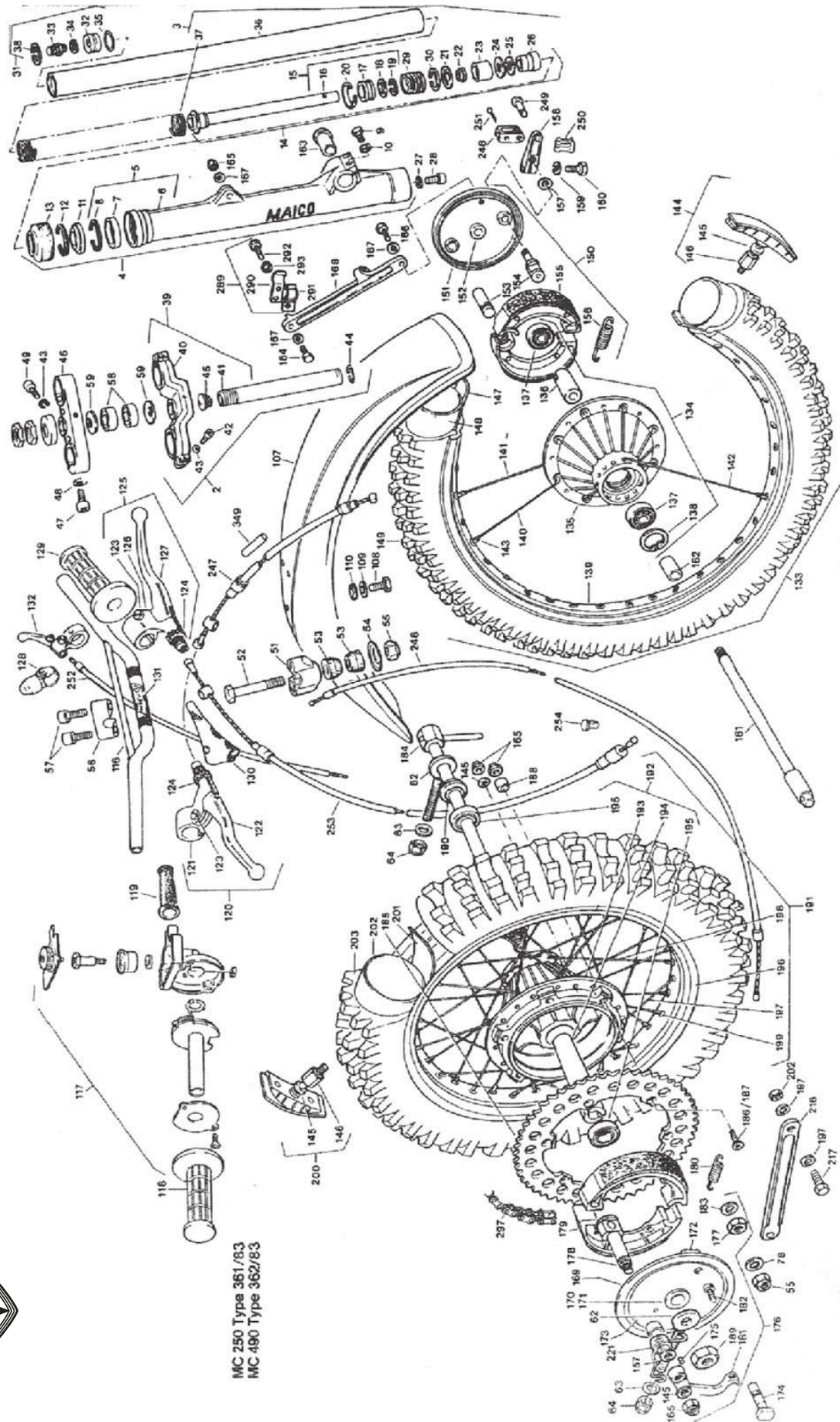
MAICO USA, Inc., 1256 Progress Rd., Suffolk, Virginia 23134
MAICO WEST, 110 Santa Anita Ave., Burbank, California 91502

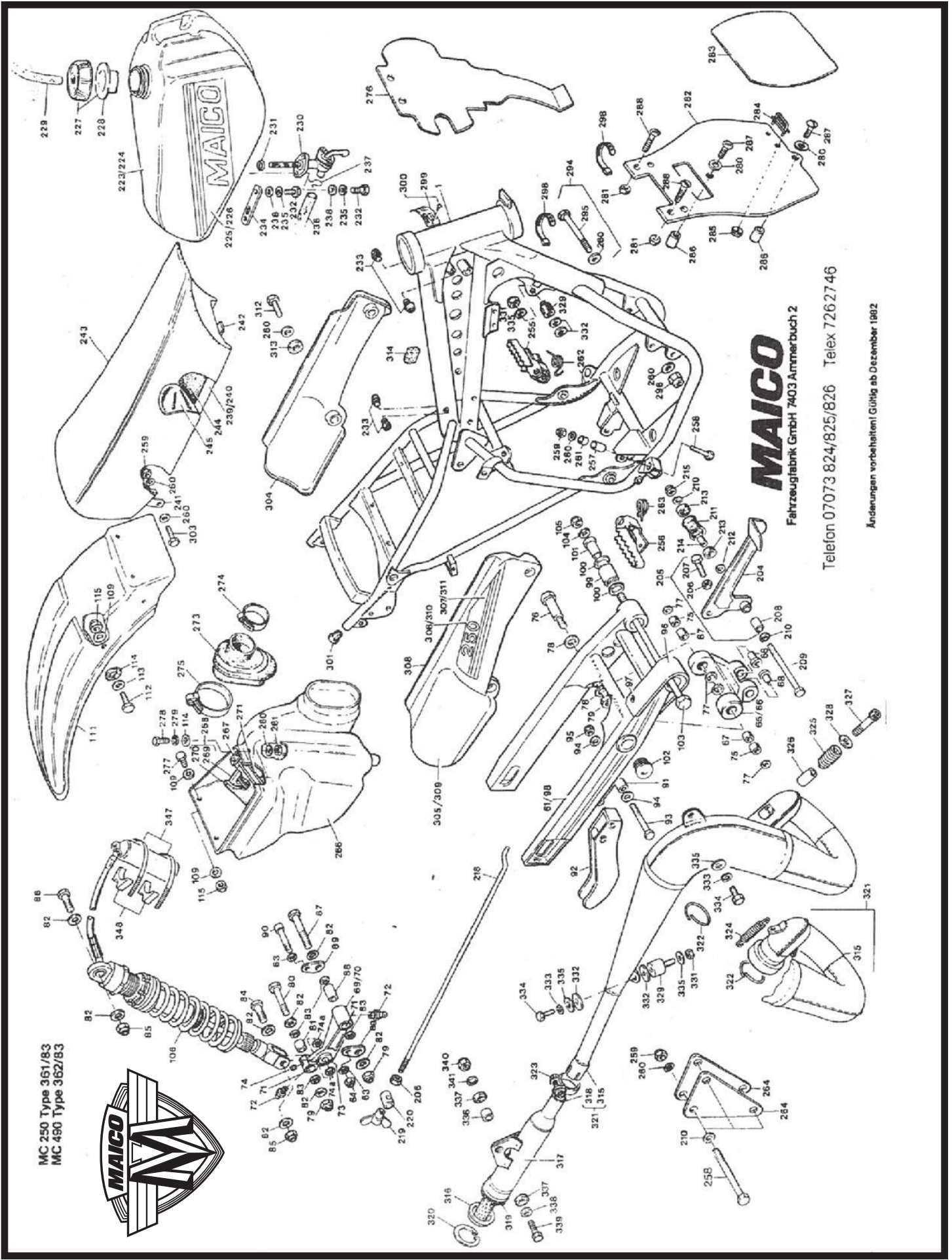


MAICO
always a step ahead!



11.0 Explosionszeichnung mit Legende
11.1 Fahrwerk, Räder





MC 250 Type 361/83
MC 450 Type 362/83

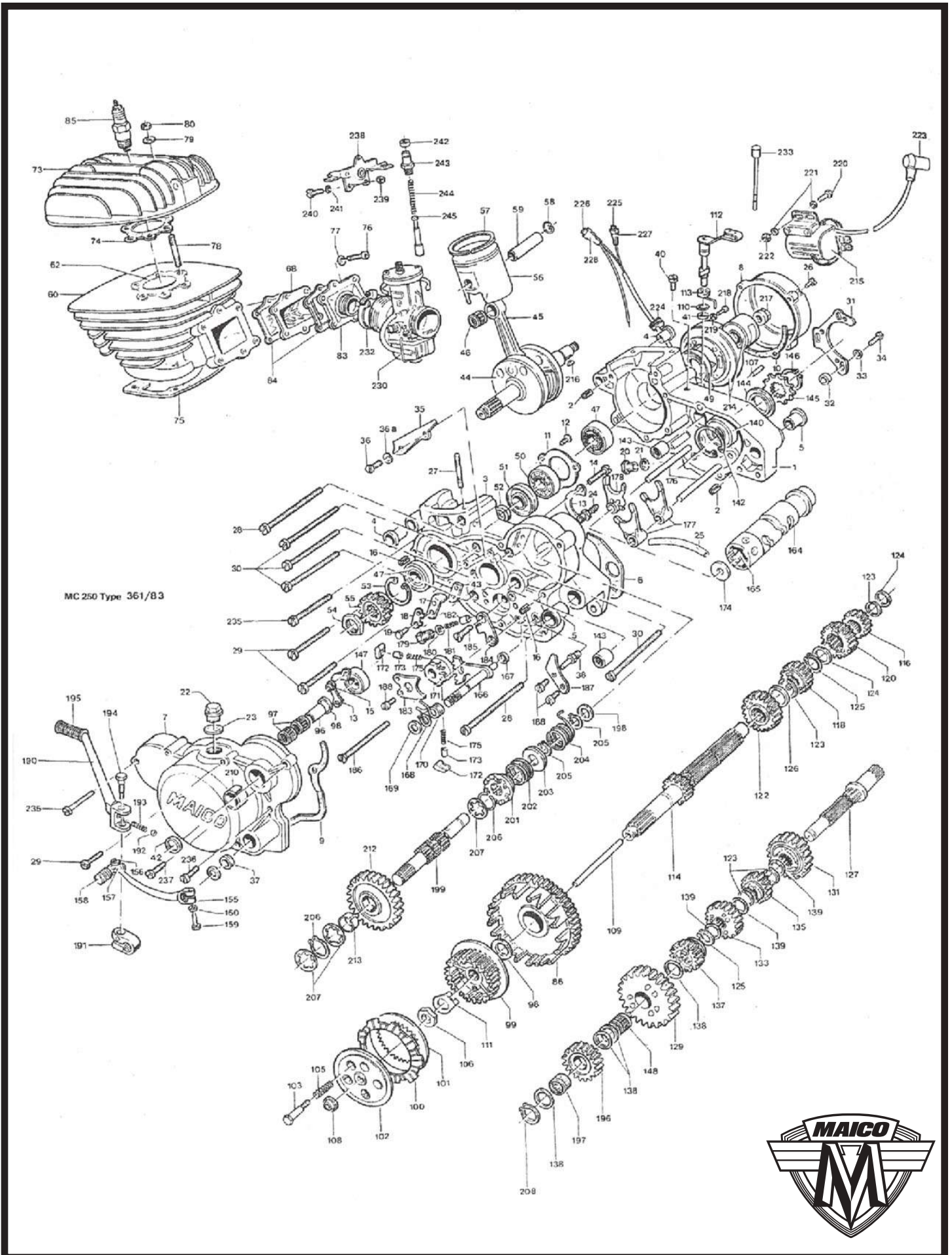


MAICO

Fahrzeugfabrik GmbH 7403 Ammerbuch 2

Telefon 07073 824/825/826 Telex 7262746

Änderungen vorbehalten! Gültig ab Dezember 1982



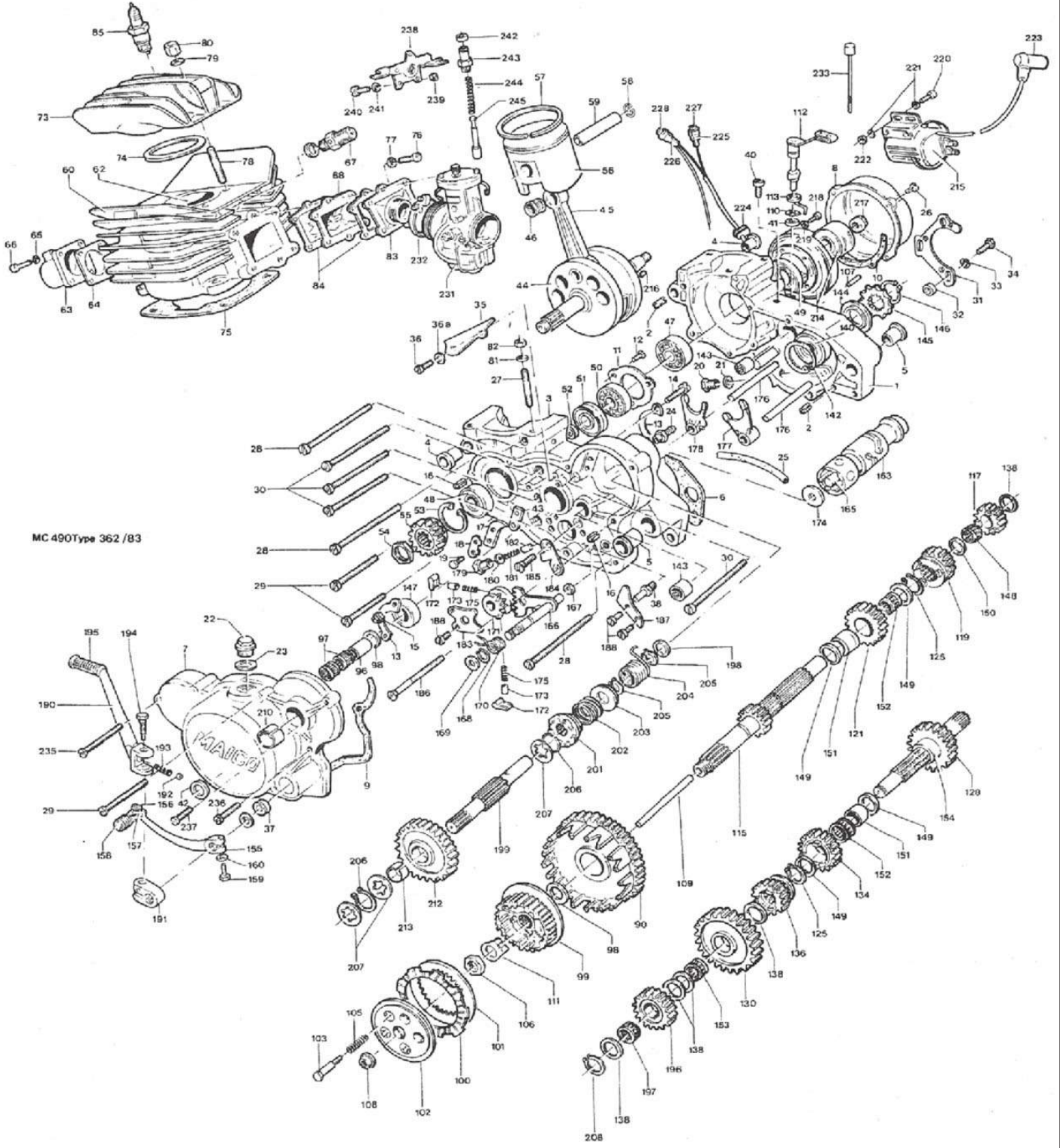


Bild Nr.	EDV Nr.	Bezeichnung Description	Typ 361 MO 250	Typ 362 MC 490	Bild Nr.	EDV Nr.	Bezeichnung Description	Typ 361 MO 250	Typ 362 MC 490
1	7995	Rahmen	1	1	62	7841	Kettenspanner	2	2
2	7472	Frame	1	1	63	1734	Chain tensioner	4	4
3	7480	Telegabel kpl.	1	1	64	1692	Scheibe B 8,4 DIN 125	3	3
4	6631	Gabelholm kpl.	2	2	65	7844	Washer	1	1
5	6626	Fork leg cpl.	2	2	66	7845	Sicherungsmutter NM 8 DIN 980	1	1
6	6630	Gleitrohr vollst.	2	2	67	7846	Securing nut	2	2
7	6436	Fork slider cpl.	2	2	68	7847	Gelenkgabel vollst.	1	1
8	6437	Gleitrohr mit Buchse	2	2	69	7848	Joint fork cpl.	1	1
9	1571	Fork slider with bush	2	2	70	7849	Gelenkgabel	1	1
10	1510	Gleitrohr leer	2	2	71	7424	Joint fork	4	4
11	6439	Führungsbuchse	2	2	72	7850	Lagerbuchse	2	2
12	6440	Guide bush	2	2	73	7427	Bush	1	1
13	6828	Sprengring	2	2	74	1465	Schmierrippel AM 6	1	1
14	7478	Circclip	4	4	74a	6065	Nipple	2	2
15	7477	Sechskantschraube M 6 x 30 DIN 931	4	4	75	7851	Gelenklager	2	2
16	7475	Federring B 6 DIN 128	4	4	76	7852	Hinge bearing	2	2
17	6447	Spring ring	2	2	77	7853	Gewindestift M 5 x 4	1	1
18	6448	Stangendichtung	2	2	78	1735	Pin	2	2
19	6449	Sealing ring for fork	2	2	79	1694	O-Ring Ø 12,37 x 2,62	2	2
20	6450	Sprengring SB 55 x 1,5	2	2	80	7854	O-Ring	2	2
21	6426	Circclip	2	2	81	7432	Gelenkbuchse	2	2
22	6454	Hutmanschette	2	2	82	1737	Bush	1	1
23	7478	Fork wiper	2	2	83	7550	Gelenkbuchse	4	4
24	7477	Dampfer vollst.	2	2	84	7546	Washer	1	1
25	7475	Dampfer cpl.	2	2	85	1727	Dichttring	2	2
26	7475	Dampferrohr vollst.	2	2	86	7855	Sealing ring	1	1
27	6447	Dampferrohr gelötet	2	2	87	7856	Sealing ring	1	1
28	6448	Dampferkolben	2	2	88	7857	Federbeinbolzen	1	1
29	6448	Dampfer piston	2	2	89	7858	Bolt	1	1
30	6448	Scheibe 23,9 x 28,2 x 0,9	2	2	90	1598	Sicherungsmutter NM 12 x 1,5 DIN 960	2	2
31	6449	Washer	2	2	91	7864	Securing nut	1	1
32	6450	Sprengring SW 24	2	2	92	7859	Federbeinbolzen	1	1
33	6450	Circclip	2	2	93	1573	Hebballagerbolzen	1	1
34	6426	Kolbenring	2	2	94	1732	Bolt	1	1
35	6426	Piston ring	2	2	95	1690	Sicherungsmutter NM 6 DIN 980	1	1
36	6454	Ventileite	2	2	96	7861	Securing nut	1	1
37	6427	Valve seat	2	2	97	1514	Gleitschutzplatte	2	2
38	6427	Valve	2	2	98	7862	Protection plate	1	1
39	6427	Dämpferinsatz	2	2	99	3932	Senkschraube M 6 x 10 DIN 963	2	2
40	6456	Dampfer ineert	2	2	100	1930	Countersunk screw	1	1
41	6457	Scheibe 29,9 x 36,7 x 0,2	2	2	101	1931	Hinterradschwinge mit Lagern	1	1
42	6457	Washer	2	2	102	7863	Rear wheel swing arm with bearings	2	2
43	6458	Sicherungsring 37 x 1,5	2	2	103	3937	Needle bush	4	4
44	6458	Securing ring	2	2	104	1718	Präzisions-O-Ring	2	2
45	6458	Dampferrohrhülse	2	2	105	5011	O-Ring	2	2
46	6459	Bush for damper tube	2	2	106	7865	Buchse für Hinterradschwinge	2	2
47	6459	Dichttring A 10 x 15 DIN 7603	2	2	107	7895	Bush for rear swing arm	2	2
48	1655	Sealing ring	2	2	108	1569	Rundstopfen	1	1
49	7479	Innensechskantschraube M 10 x 25	2	2	109	1750	Flug	1	1
50	7479	Inner hexagon screw	2	2	110	2708	Achse für Schwinge	1	1
51	7479	Inner hexagon screw	2	2	111	7896	Spindle	1	1
52	7479	Counter spring	2	2	112	1568	Federscheibe B 14 DIN 137	1	1
53	6428	Sprengring SB 58	2	2	113	1732	Spring washer	1	1
54	6429	Circclip	2	2	114	2708	Sicherungsmutter NM 14 x 1,5 DIN 980	1	1
55	6429	Verchlussstopfen	2	2	115	1690	Securing nut	1	1
56	6431	Verchlussstopfen	2	2	116	6668	Federbein kpl. Corte & Coeso	nB	nB
57	2184	Luftventil kpl.	2	2	117	7898	Dampfer cpl.	nB	nB
58	277	Valve cpl.	2	2	118	7899	Federbein kpl. CHLINS	nB	nB
59	6464	Dichttring A 8 x 11,5	2	2	119	7893	Dampfer cpl.	1	1
60	6464	Sealing ring	2	2	120	2215	Schutzblech vorn	1	1
61	6637	Präzisions-O-Ring 29,74 x 3,53	2	2			Front fender	4	4
62	6637	O-Ring	2	2			Sechskantschraube M 6 x 20 DIN 933	4	4
63	7481	Standrohr	2	2			Scheibe 6,4 DIN 9021	4	4
64	7481	Main tube	2	2			Washer	4	4
65	7481	Gabelfeder	2	2			Gummisohle	4	4
66	6457	Fork spring	2	2			Rubber washer	1	1
67	6457	Sicherungsring 37 x 15 DIN 472	2	2			Hinterradkotflügel	1	1
68	7473	Querrhant unten kpl.	1	1			Rear fender	1	1
69	6640	Lower cross head cpl.	1	1			Sechskantschraube M 6 x 18	4	4
70	6640	Querrhant unten	1	1			Hexagon screw	4	4
71	7483	Lower cross head	1	1			Scheibe B 6,4 DIN 125	8	8
72	7483	Steuerrohr	1	1			Washer	4	4
73	1649	Steering tube	1	1			Gummisohle	4	4
74	1511	Innensechskantschraube M 8 x 45 DIN 912	4	4			Rubber washer	4	4
75	1511	Inner hexagon screw	5	5			Sechskantschraube M 6 x 20 DIN 933	4	4
76	1511	Federring B 8 DIN 128	5	5			Sicherungsmutter NM 6 DIN 980	4	4
77	7484	Spring ring	1	1			Securing nut	1	1
78	7490	Sprengring SW 27	1	1			Lenkerbügel	1	1
79	7490	Circclip	1	1			Handlebar	1	1
80	7474	Kunststoffstopfen	1	1			Gasgriff kpl.	1	1
81	7474	Plastic plug	1	1			Throttle grip cpl.	1	1
82	3270	Querrhant oben	1	1			Griffbezug	1	1
83	3270	Upper cross head	1	1			Rubber cap	1	1
84	1512	Innensechskantschraube M 10 x 40	2	2			Kupplungshebel kpl.	1	1
85	1512	Inner hexagon screw	2	2			Clutch lever cpl.	1	1
86	1512	Federring B 10 DIN 128	2	2					
87	1648	Spring ring	1	1					
88	6474	Innensechskantschraube M 8 x 40	1	1					
89	6474	Inner hexagon screw	2	2					
90	7618	Steuerkopfmutter (wahlweise)	nB	nB					
91	6479	Steering head nut (optionally)	2	2					
92	1619	Lenkerklemmstück unten	2	2					
93	6005	Lower handle bar clamp	2	2					
94	6005	Sechskantschraube M 10 x 55	4	4					
95	6642	Hexagon screw	4	4					
96	6642	Gummipuffer	2	2					
97	6642	Rubber buffer	2	2					
98	1693	Scheibe	2	2					
99	1693	Washer	2	2					
100	6478	Sicherungsmutter NM 10 DIN 980	2	2					
101	6478	Securing nut	2	2					
102	1629	Lenkerklemmstück oben	4	4					
103	1629	Upper handle bar clamp	4	4					
104	1629	Innensechskantschraube M 8 x 30	4	4					
105	3297	Inner hexagon screw	2	2					
106	3297	Regelrollenlager	2	2					
107	3297	Roller bearing	2	2					
108	6480	Nilosring	1	1					
109	6480	Nilos ring	1	1					
110	7840	Abdeckschale	1	1					
111	7840	Cover plate	1	1					
112	7840	Hinterradschwinge	1	1					
113	7840	Rear wheel swing arm	1	1					

614	EDV	Bezeichnung	Typ 361	Typ 362	614	EDV	Bezeichnung	Typ 361	Typ 362
Nr.	Nr.	Description	MC 250	MC 400	Nr.	Nr.	Description	MC 250	MC 400
121	2213	Kupplungshebelgelenkstück	1	1	179	194	Bremsbocke	2	2
		Hinge for clutch lever					Brake shoe		
122	2216	Kupplungshebel leer	1	1	180	1323	Hockstufefeder	2	2
		Clutch lever					Tension spring		
123	133	Hebelchraube mit Mutter	2	2	181	3190	Bremshebel für Hinterradnabe	1	1
		Lever screw with nut					Brake lever for rear hub		
124	212	Stellschraube mit Mutter	2	2	182	3210	Innensechskantschraube M 10 x 40 x 32	1	1
		Adjusting screw with nut					Inner hexagon screw		
125	2218	Bremshebel kpl.	1	1	183	1715	Federscheibe B 10 DIN 157	1	1
		Brake lever cpl.					Spring washer		
126	2217	Bremshebelgelenkstück	1	1	184	7903	Steckachse hinten	1	1
		Hinge of brake lever					rear axle		
127	2219	Handbremshebel leer	1	1	185	7522	Zahnkranz 52 Z	1	1
		Hand brake lever only					Sprocket		
128	2220	Kurserschlußknopf kpl.	1	1	7521		Zahnkranz 54 Z	nB	nB
		Kill button					Sprocket		
129	7092	Fastgriff	1	1	7523		Zahnkranz 50 Z	nB	nB
		Rubber grip					Sprocket		
130	7091	Schutzkappe	2	2	7514		Zahnkranz 56 Z	nB	nB
		Lever cover					Sprocket		
131	6690	Schrifttaug	1	1	186	1880	Genkschraube m. Innensechsk. M 8 x 50	3	3
		Sticker					Countersunk screw with inner hexagon		
132	7609	Dekohebel kpl.	-	1	187	1803	Genkschraube m. Innensechsk. M 8 x 40	3	3
		Lever for decompressor					Countersunk screw with inner hexagon		
	7890	Schraubnippel für Dekohebel	-	1	188	6696	Distanzhülse	3	3
		Nipple					Spacer bush		
133	7955	Vorderrad leer	1	1	189	8484	Sicherungsmutter NM 16 x 1,5 DIN 980	1	1
		Front wheel only					Securing nut		
134	6671	Vorderradnabe mit Lager	1	1	190	7907	Distanzstück	1	1
		Front wheel hub with bearing					Spacer part		
135	6670	Vorderradnabe leer	1	1	191	7897	Hinterrad leer	1	1
		Front wheel hub only					Rear wheel only		
136	2428	Distanzrohr für Vorderradnabe	1	1	192	6684	Hinterradnabe vollst.	1	1
		Spacer tube for front wheel hub					Rear wheel hub cpl.		
137	2427	Rillenkugellager 6202 RS DIN 625	2	2	193	6689	Hinterradnabe leer	1	1
		Ball bearing					Rear wheel hub only		
138	1853	Sicherungsring 35 x 1,5 DIN 472	1	1	194	3276	Distanzrohr hinten	1	1
		Securing ring					Spacer tube rear		
139	7956	Tiefbettfelge 21 "	1	1	195	205	Rillenkugellager 6303 2 RS C 7	2	2
		Rim					Ball bearing		
140	7957	Speiche 4 x 3,5 x 4 x 230 - 80°	9	9	196	7699	Tiefbettfelge 18 "	1	1
		Spoke					Rim		
141	7958	Speiche 4 x 3,5 x 4 x 230 - 100°	9	9	197	7397	Speiche ED 4,5 x 4 x 163	10	10
		Spoke					Spoke		
142	6659	Speiche 4 x 3,5 x 4 x 244 - 155°	18	18	198	7398	Speiche ED 4,5 x 4 x 209	10	10
		Spoke					Spoke		
143	2408	Nippel M 4,5	36	36	199	2408	Nippel M 4,5	36	36
		Nipple					Nipple		
144	7960	Reifenhalter kpl.m. Mutter u. Scheibe	1	1	200	7909	Reifenhalter kpl. m. Mutter u. Scheibe	1	1
		Tire holder cpl. with nut and washer					Tire holder cpl. with nut and washer		
145	1754	Scheibe B K,4 DIN 125	6	6	201	2405	Felgenband 18 "	1	1
		Washer					Tire flap		
146	209	Mutter für Reifenhalter	2	2	202	2015	Schlauch 4,50 x 18 "	1	1
		Nut for tire holder					Hose		
147	2004	Felgenband 21 "	1	1	203	2008	Reifen 4.50 x 18 "	1	1
		Tire flap					Tire		
148	2002	Schlauch 3,00 - 21 "	1	1	7923		Reifen 5.00 x 18 " Pirelli	nB	nB
		Hose					Tire		
149	2003	Reifen 3.00 - 21 " Gell. Deck	nB	nB	7965		Reifen 5.00 x 18 " Sand Crown	nB	nB
		Tire					Tire		
	7962	Reifen 3.20 - 21 " Pirelli	nB	nB	7966		Reifen 4.50 x 18 " Sand Crown	nB	nB
		Tire					Tire		
	7963	Reifen 3.20 x 21 " Sand Crown	nB	nB	204	7010	Hubbremshebel geschweigt	1	1
		Tire					Foot brake lever		
	7964	Reifen 3.00 x 21 " Sand Crown	nB	nB	205	7915	Hubbremshebel vollst.	1	1
		Tire					Foot brake lever cpl.		
150	6144	Bremsankerplatte kpl.	1	1	206	1667	Sechskantsmutter M 6 DIN 934	1	1
		Brake plate cpl.					Hexagon nut		
151	2236	Bremsankerplatte leer (mit Buchse)	1	1	207	7916	Sechskantschraube M 6 x 30 DIN 933	1	1
		Brake plate only (with bush)					Hexagon screw		
152	2238	Ankerplattenbuchse	1	1	208	6702	Lagerbuchse für Bremshebel	1	1
		Bushing					Bush for brake lever		
153	2410	Bremsbuckendrehbolzen	1	1	209	7917	Sechskantschraube M 8 x 100 DIN 931	1	1
		Pivot bolt					M 8 x 100 DIN 931		
154	2419	Bremschlüssel	1	1	210	1754	Scheibe B 0,4 DIN 125	2	2
		Brake toggle					Washer		
155	4322	Bremsbocke	2	2	211	7991	Umlenkrolle	1	1
		Brake shoe					Roller		
156	6148	Stegfeder für Bremsbocke	2	2	212	7996	Distanzscheibe	1	1
		Spring for brake shoe					Spacer washer		
157	187	Gummischeibe	2	2	213	7993	Rillenkugellager 608 2 RS DIN 625	2	2
		Rubber washer					Ball bearing		
158	6145	Bremshebel vorn	1	1	214	7992	Distanzbuchse	1	1
		Brake lever front					Spacer bush		
159	1704	Federring B 6 DIN 127	1	1	215	1692	Sicherungsmutter NM 6 DIN 900	2	2
		Spring ring					Securing nut		
160	1570	Sechskantschraube M 6 x 25 DIN 933	1	1	216	1970	Bremsanker hinten	1	1
		Hexagon screw					Brake axle rear		
161	2247	Steckachse vorn	1	1	217	7921	Sechskantschraube M 8 x 60 DIN 933	1	1
		Front axle					Hexagon screw		
162	2250	Distanzbuchse	1	1	218	7936	Zugstange für Hinterradbremse	1	1
		Spacer bush					Rear brake rod for rear brake		
163	2430	Gewindebuchse	1	1	219	243	Flügelmutter	1	1
		Bush					Nut		
164	1554	Sechskantschraube M 8 x 40 DIN 931	1	1	220	244	Nippelaufnahme	1	1
		Hexagon screw					Nipple holder		
165	1692	Sicherungsmutter NM 6 DIN 980	6	6	221	7922	Bremshebelfeder	1	1
		Securing nut					Brake lever spring		
166	1589	Sechskantschraube M 8 x 20 DIN 933	1	1	222	406	Benzinschlauch Ø 7 x 2	x	x
		Hexagon screw					Hose		
167	1714	Scheibe Ø 0,2 x 20 x 1,8	3	3	223	7924	Tank mit Dekor	1	1
		Washer					Tank with decal		
168	6147	Bremsanker vorn	1	1	224	6508	Tank	1	1
		Brake shoe front					Tank		
169	7900	Bremsankerplatte mit Einpressteilen	1	1	225	7927	Tankdekor links	1	1
		Brake plate					Tank decal left		
170	7901	Distanzbuchse für Ankerplatte	1	1	226	7928	Tankdekor rechts	1	1
		Spacer bush for brake plate					Tank decal right		
171	183	Distanzbuchse für Ankerplatte	1	1	227	6515	Tankdeckel kpl.	1	1
		Spacer bush for brake plate					tank cap cpl.		
172	3187	Ankerplatte hinten leer	1	1	228	6516	Deckeldichtung	1	1
		Brake plate rear only					Cover gasket		
173	3188	Abdeckblech	1	1	229	6517	Schlauch	1	1
		Cover plate					Hose		
174	3189	Bremsbocken-Drehbolzen	1	1	230	6509	Benzinhahn	1	1
		Pivot bolt					Gas tap		
175	1901	Halbrundkerbtagel Ø 3 x 6 DIN 1476	1	1	231	6510	O-Ring	1	1
		Oval head nail					O-ring		
176	7902	Bremsankerplatte kpl.	1	1	232	1525	Sechskantschraube M 6 x 14 DIN 933	4	4
		Brake plate cpl.					Hexagon screw		
177	1674	Sechskantsmutter M 10 DIN 934	1	1	233	6531	Anschlagpuffer	4	4
		Hexagon nut					Rubber buffer		
178	151	Bremschlüssel	1	1	234	7994	Lasche	1	1
		Brake toggle					Holding plate		

Bild Nr.	EDV Nr.	Beschreibung Description	Typ 250 Nr.	Typ 360 Nr.	Bild Nr.	EDV Nr.	Beschreibung Description	Typ 250 Nr.	Typ 360 Nr.
235	1704	Federerring B 6 DIN 127	4	4	235	1704	Federerring B 6 DIN 127	1	1
236	406	Spring ring	X	X	236	406	Spring ring	1	1
237	3352	Schlauchklemmung	2	2	237	1610	Setz Motor-Ablasschrauben	2	2
238	1730	Hose clamp	2	2	238	1700	Setz Motor-Ablasschrauben M 6 x 120 DIN 934	2	2
239	7941	Scheibe B 6,4 DIN 9021	2	2	239	1700	Hexagon screw	2	2
240	7941	Washer	2	2	240	1700	Sicherungsmutter M 6 x DIN 980	2	2
241	6747	Sitzbankwanne mit Füßel und Halter.	1	1	241	3704	Securing nut	1	1
242	6747	Seat base with clamp and bracket	1	1	242	325	Keilbleiber	2	2
243	6747	Seat base only	1	1	243	325	Rubber cable clip	1	1
244	6747	Sitzbankbügel	1	1	244	1900	Typschild	1	1
245	6751	Halteleuchte	1	1	245	1900	Identifikation plate	2	2
246	7942	Clamp holder	1	1	246	6565	Halbesonderbügel 2 x 4 DIN 1476	2	2
247	7942	Sitzbank Kpl. (niedere Form)	1	1	247	6565	Oval head nut	2	2
248	7945	Seat cap. (low)	nB	nB	248	6565	Verordnungsstapfen	2	2
249	7945	Sitzbank Kpl. (hohe Form)	nB	nB	249	6760	Rubber cap	2	2
250	7945	Seat cap. (high)	nB	nB	250	6760	Kabelhalter 5,6 x 277	2	2
251	7946	Polster (niedere Form)	1	1	251	1547	Rubber cable clip	2	2
252	7946	Seat padding (low)	1	1	252	7971	Sechskantschraube M 6 x 16 DIN 934	2	2
253	7946	Polster (hohe Form)	nB	nB	253	7971	Hexagon screw	2	2
254	7946	Seat padding (high)	nB	nB	254	7971	Seitennummernschild links	1	1
255	7947	Bezug (niedere Form)	1	1	255	7977	Side panel left	1	1
256	7947	Seat cover (low)	nB	nB	256	7977	Abziehfolie 1000 grün	1	1
257	7947	Bezug (hohe Form)	nB	nB	257	7977	Abziehfolie 1000 gelb	1	1
258	7947	Seat cover (high)	nB	nB	258	7977	Abziehfolie 1000 gelb	1	1
259	7954	Gaszug Kpl.	1	1	259	6747	Decal left yellow	1	1
260	7954	Gas throttle	1	1	260	6747	Decal left yellow	1	1
261	7958	Bremsszug Kpl.	1	1	261	6747	Schraffurung 250	1	1
262	6151	Brake cable	1	1	262	6755	Sticker	1	1
263	6151	Bremsszugaufnahme	1	1	263	6755	Schraffurung 400	1	1
264	6152	Brake cable intake	1	1	264	7970	Sticker	1	1
265	6153	Bolzen mit Kopf	1	1	265	7970	Schaltender links	1	1
266	6153	Bolt with head	1	1	266	7970	Decal left	1	1
267	1897	Bolzen-Sicherung	1	1	267	7970	Seitennummernschild rechts	1	1
268	315	Clip for bolt	1	1	268	7970	Side panel right	1	1
269	315	Decoupler cable	1	1	269	7980	Abziehfolie rechts grün	1	1
270	7930	Kupplungszug	1	1	270	7980	Abziehfolie rechts grün	1	1
271	7930	Clutch cable	1	1	271	7980	Decal right green	1	1
272	7931	Nippelhalter	1	1	272	7987	Abziehfolie rechts gelb	1	1
273	6731	Hubarme links	1	1	273	6747	Decal right yellow	1	1
274	6731	Foot rest left	1	1	274	6747	Schraffurung 250	1	1
275	6735	Hubarme rechts	1	1	275	6755	Sticker	1	1
276	6735	Foot rest right	1	1	276	6755	Schraffurung 400	1	1
277	6739	Lagerbuchse	2	2	277	7981	Schaltender rechts	1	1
278	6739	Bearing bush	2	2	278	7981	Decal right	1	1
279	1593	Sechskantschraube M 8 x 60 DIN 934	2	2	279	6050	Sechskantschraube M 6 x 16 DIN 934	4	4
280	1602	Hexagon screw	2	2	280	6050	Oval head screw	4	4
281	1734	Sicherungsmutter M 6 x DIN 980	2	2	281	2700	Gummscheibe	4	4
282	1734	Washer	2	2	282	2700	Rubber washer	4	4
283	6750	Dichtungsbuchse	2	2	283	6750	Gummscheibe	4	4
284	6750	Spacer bush	2	2	284	6750	Rubber washer	4	4
285	6739	Hubarmenfeder links	1	1	285	6750	Gummscheibe	4	4
286	6739	Foot rest spring left	1	1	286	6750	Rubber washer	4	4
287	6740	Hubarmenfeder rechts	1	1	287	6750	Gummscheibe	4	4
288	6740	Foot rest spring right	1	1	288	6750	Rubber washer	4	4
289	7949	Stützblech für Zylinderkopf	2	2	289	6750	Gummscheibe	4	4
290	7935	Supporting plate for cylinder head	2	2	290	6750	Rubber washer	4	4
291	1598	Stützblech für Zylinderkopf	2	2	291	6750	Gummscheibe	4	4
292	1598	Supporting plate for cylinder head	2	2	292	6750	Rubber washer	4	4
293	7969	Sechskantschraube M 8 x 60 DIN 934	2	2	293	6750	Gummscheibe	4	4
294	7969	Hexagon screw	2	2	294	6750	Rubber washer	4	4
295	7969	Luftfilterkasten mit Haltewinkel	1	1	295	6750	Gummscheibe	4	4
296	7969	Air filter box	1	1	296	6750	Rubber washer	4	4
297	7969	Clamp	1	1	297	6750	Gummscheibe	4	4
298	7434	Filterpatrone Kpl.	1	1	298	6750	Rubber washer	4	4
299	7435	Filter element cal.	1	1	299	6750	Gummscheibe	4	4
300	7436	Filterkorb	1	1	300	6750	Rubber washer	4	4
301	7436	Filter cage	1	1	301	6750	Gummscheibe	4	4
302	7437	Filtereinsatz	1	1	302	6750	Rubber washer	4	4
303	7437	Air filter foam	1	1	303	6750	Gummscheibe	4	4
304	7973	Federbügel vollst.	1	1	304	6750	Rubber washer	4	4
305	7973	Holding wire cal.	1	1	305	6750	Gummscheibe	4	4
306	603	Ansaugverbindung	1	1	306	6750	Rubber washer	4	4
307	603	Intake flange	1	1	307	6750	Gummscheibe	4	4
308	7451	Schlauchklemme	1	1	308	6750	Rubber washer	4	4
309	7451	Clamp	1	1	309	6750	Gummscheibe	4	4
310	7948	Spritzwand	1	1	310	6750	Rubber washer	4	4
311	1569	Splach guard	2	2	311	6750	Gummscheibe	4	4
312	1570	Sechskantschraube M 6 x 20 DIN 934	2	2	312	6750	Rubber washer	4	4
313	1570	Hexagon screw	2	2	313	6750	Gummscheibe	4	4
314	1732	Sechskantschraube M 6 x 25 DIN 934	4	4	314	6750	Rubber washer	4	4
315	1732	Washer	4	4	315	6750	Gummscheibe	4	4
316	1750	Scheibe B 6,4 DIN 9021	10	10	316	6750	Rubber washer	4	4
317	1690	Washer	6	6	317	6750	Gummscheibe	4	4
318	7444	Sicherungsmutter M 6 DIN 980	1	1	318	6750	Rubber washer	4	4
319	7444	Securing nut	1	1	319	6750	Gummscheibe	4	4
320	7444	Seitennummernschild vorn	1	1	320	6750	Rubber washer	4	4
321	7975	Front number plate	1	1	321	6750	Gummscheibe	4	4
322	7975	Abziehfolie vorn grün	1	1	322	6750	Rubber washer	4	4
323	7903	Front decal, green	1	1	323	6750	Gummscheibe	4	4
324	6247	Abziehfolie vorn gelb	1	1	324	6750	Rubber washer	4	4
325	6247	Front decal yellow	1	1	325	6750	Gummscheibe	4	4
326	6269	Führungsbügel	1	1	326	6750	Rubber washer	4	4
327	6269	Guide plate	2	2	327	6750	Gummscheibe	4	4
328	3094	Feder Mutter	2	2	328	6750	Rubber washer	4	4
329	3094	Spring nut	2	2	329	6750	Gummscheibe	4	4
330	6253	Glaskappe	2	2	330	6750	Rubber washer	4	4
331	6253	Glaskappe	2	2	331	6750	Gummscheibe	4	4
332	6257	Kunststoffschraube M 6 x 22	2	2	332	6750	Rubber washer	4	4
333	6257	Plastic screw	2	2	333	6750	Gummscheibe	4	4
334	6259	Bremsszughalter vollst.	1	1	334	6750	Rubber washer	4	4
335	6259	Brake cable holder cal.	1	1	335	6750	Gummscheibe	4	4
336	6259	Bremsszughalter	1	1	336	6750	Rubber washer	4	4
337	6259	Brake cable holder	1	1	337	6750	Gummscheibe	4	4
338	6255	Klemmblech	1	1	338	6750	Rubber washer	4	4
339	1565	Clamp plate	1	1	339	6750	Gummscheibe	4	4
340	1565	Sechskantschraube M 6 x 12 DIN 934	1	1	340	6750	Rubber washer	4	4
341	1565	Hexagon screw	1	1	341	6750	Gummscheibe	4	4
342	2275	Isolierschlauch 20 x 0,7	X	X	342	2275	Isolierschlauch 20 x 0,7	X	X

Bild Nr.	EDV Nr.	Bezeichnung Description	Typ 351 MC 250	Typ 362 MC 490	Bild Nr.	EDV Nr.	Bezeichnung Description	Typ 351 MC 250	Typ 362 MC 490
1	8018	Kurbelgehäuse rechts Engine case, right	1	-	51	547	Wellendichtring 32 x 52 x 7/0 Radial sealing ring	1	1
	8027	Kurbelgehäuse rechts Engine case, right	-	1	52	8260	Innenring 25 x 31,45 x 17,5 Inner ring	1	-
2	1997	Innenring Inner ring	2	2		8290	Innenring 25 x 31,45 x 13 Inner ring	-	1
3	8020	Kurbelgehäuse links Engine case, left	1	-	53	6305	Sicherungsring 52 x 2 DIN 472 Securing ring	2	2
	8026	Kurbelgehäuse links Engine case, left	-	1	54	8255	Mutter auf KW SW 32 Nut on crankshaft	1	1
4	1995	Befestigungsbuchse Fixing bush	4	4	55	8049	Zahnrad auf KW Crankshaft sprocket	1	-
5	1994	Schwingenachsbuchse Oscillant bush	2	2		8070	Zahnrad auf KW Crankshaft sprocket	-	1
6	8021	Gehäusedichtung Engine case gasket	1	-	56	8370	Kolben kpl. Ø 66,97 Piston cpl.	1	-
	8030	Gehäusedichtung Engine case gasket	-	1		8372	Kolben kpl. Ø 67,17 Piston cpl.	1	-
7	8024	Kupplungsdeckel Clutch cover	1	1		8373	Kolben kpl. 67,37 Piston cpl.	1	-
8	1991	Limasdeckel Ignition case cover	1	1		8374	Kolben kpl. Ø 67,57 Piston cpl.	1	-
9	8023	Deckeldichtung Clutch case gasket	1	1		8375	Kolben kpl. Ø 67,77 Piston cpl.	1	-
10	1980	Deckeldichtung rechts Ignition case gasket, right	1	1		8376	Kolben kpl. Ø 67,97 Piston cpl.	1	-
11	1968	Lagerhalblech KW bearing cover plate	1	1		6813	Kolben kpl. Ø 86,44 Piston cpl.	-	1
12	1795	Senkschraube M 5 x 8 DIN 965 Countersunk screw	3	3		6815	Kolben kpl. Ø 86,64 Piston cpl.	-	1
13	8008	Lagerhalblech HW bearing cover plate	2	2		6816	Kolben kpl. Ø 86,84 Piston cpl.	-	1
14	1536	Zylinderschraube M 6 x 25 DIN 84 Cylinder screw	2	2		6817	Kolben kpl. Ø 87,04 Piston cpl.	-	1
15	1690	Sicherungsmutter NM 6 DIN 980 Securing nut	2	2		6818	Kolben kpl. Ø 87,24 Piston cpl.	-	1
16	1831	Spannhülse 8 x 10 DIN 7346 tension pin	2	2		6819	Kolben kpl. Ø 87,44 Piston cpl.	-	1
17	8009	Anlaufblech für Sperrzahnkörper Washer	1	1	57	523	Kolbenring Ø 67,00 Piston ring	1	-
18	8010	Sicherungsblech flat washer	1	1		6184	Kolbenring Ø 67,20 Piston ring	1	-
19	1569	Sechskantschraube M 6 x 20 DIN 933 Hexagon screw	2	2		6187	Kolbenring Ø 67,40 Piston ring	1	-
20	895	Magnetverschlusschraube Magnet screw cap	1	1		2067	Kolbenring Ø 67,60 Piston ring	1	-
21	410	Dichtring A 14 x 18 DIN 7603 Seal ring	1	1		6189	Kolbenring Ø 67,80 Piston ring	1	-
22	408	Verachlußschraube M 20 x 1,5 DIN 910 screw cap	1	1		6191	Kolbenring Ø 68,00 Piston ring	1	-
23	409	Flachdichtring A 20 x 24 DIN 7603 seal ring	1	1		6814	Kolbenring Ø 86,50 Piston ring	-	1
24	1985	Einschraubstutzen Breather	1	1		6820	Kolbenring Ø 86,70 Piston ring	-	1
25	263	Entlüftungsschlauch Breather tube	x	x		6821	Kolbenring Ø 86,90 Piston ring	-	1
26	1536	Zylinderschraube M 6 x 25 DIN 84 Cylinder screw	4	4		6822	Kolbenring Ø 87,10 Piston ring	-	1
27	1772	Stiftschraube M 8 x 25 DIN 835 Stud	4	-		6823	Kolbenring Ø 87,30 Piston ring	-	1
	1780	Stiftschraube M 10 x 30 DIN 835 Stud	-	4		6824	Kolbenring Ø 87,50 Piston ring	-	1
28	1545	Zylinderschraube AM 6 x 80 DIN 84 Cylinder screw	2	3	58	536	Sprengring Circlip	2	2
29	1541	Zylinderschraube AM 6 x 50 DIN 84 Cylinder screw	5	2	59	8371	Kolbenbolzen 18 x 15 x 50 Wrist pin	1	-
30	1519	Zylinderschraube AM 6 x 75 DIN 84 Cylinder screw	4	4		535	Kolbenbolzen Wrist pin	-	1
31	8011	Schutzhügel Bracket	1	1	60	8218	Zylinder vollst. Cylinder cpl.	1	-
32	8012	Distanzhülse Spacer bush	3	3		4172	Zylinder vollst. im Austausch Cylinder cpl. in exchange	1	-
33	1510	Federring B 6 DIN 128 Spring ring	3	3		8295	Zylinder vollst. Cylinder cpl.	-	1
34	1571	Sechskantschraube M 6 x 30 DIN 931 Hexagon screw	3	3		4179	Zylinder vollst. im Austausch Cylinder cpl. in exchange	-	1
35	8025	Ölleitblech Oil guide plate	1	-	61	8302	Zylinder vollst. mit Auspuffstutzen Cylinder cpl. with exhaust flange	-	1
	8031	Ölleitblech Oil guide plate	-	1	62	8220	Zylinderbuchse Cylinder bush	1	-
36	1762	Linsenzylinderschraube AM 5 x 10 Oval head cylinder screw	2	2		8227	Zylinderbuchse Cylinder bush	-	1
36a	1711	Federscheibe B 5 DIN 137 Spring washer	2	2	63	6893	Auspuffstutzen Exhaust adapter gasket	-	1
37	1865	Wellendichtring AS 12 x 22 x 7 Seal ring	1	1	64	298	Auspuffflanschdichtung Exhaust adapter gasket	-	1
38	8014	Federstift-Rückholfeder Spring pin-return spring	1	1	65	1704	Federring Spring ring	-	4
40	1526	Zylinderschraube M 8 x 10 DIN 84 Cylinder screw	1	1	66	1535	Innensechskantschraube M 6 x 25 Inner hexagon screw	-	4
41	8175	Dichtring Seal ring	1	1	67	8298	Dekovertil kpl. Decompression valve cpl.	-	1
42	1866	Wellendichtring Sealing ring	1	1	68	6796	Membrane vollst. Reed valve cpl.	1	1
43	8016	Anschlagblech Stop plate	1	1	69	6797	Membrankörper Reed valve	1	2
44	8254	Kurbelwelle vollst. Crankshaft cpl.	1	-	70	6798	Membransunze Reed valve tongue	2	2
	8284	Kurbelwelle vollst. Crankshaft cpl.	-	1	71	6799	Reed valve stop tongue Reed valve stop tongue	2	2
4061		Kurbelwelle im Austausch Crankshaft in exchange	1	-	72	1877	Linsenschraube M 3 x 8 2 4 DIN 7985 Oval head screw	6	6
4083		Kurbelwelle im Austausch Crankshaft in exchange	-	1	73	8221	Zylinderkopf Cylinder head	1	-
45	4086	Flueßreparatursatz Connecting rod repair kit	1	-		8301	Zylinderkopf Cylinder head	-	1
4068		Flueßreparatursatz Connecting rod repair kit	-	1	74	6792	Zylinderkopfdichtung Cylinder head gasket	1	-
46	424	Nadellager 0-2 Needle bearing	nB	nB		7461	Zylinderkopfdichtung Cylinder head gasket	-	1
	424	Nadellager 2-4 Needle bearing	nB	nB	75	8222	Zylinderfußdichtung 0,3 mm dick Cylinder base gasket	nB	-
	424	Nadellager 4-6 Needle bearing	nB	nB		8223	Zylinderfußdichtung 0,5 mm dick Cylinder base gasket	nB	-
47	3795	Zylinderrollenlager NU 205 C 3 Cylinder roller bearing	2	1		8224	Zylinderfußdichtung 0,7 mm dick Cylinder base gasket	nB	-
48	426	Zylinderrollenlager NU 305 C 3 Cylinder roller bearing	-	1		7462	Zylinderfußdichtung 0,3 mm dick Cylinder base gasket	-	nB
49	8057	Wellendichtring 25 x 42 x 9 Radial sealing ring	1	-		7463	Zylinderfußdichtung 0,5 mm dick Cylinder base gasket	-	nB
3469		Wellendichtring 25 x 52 x 9/01 Radial sealing ring	-	1		7464	Zylinderfußdichtung 0,7 mm dick Cylinder base gasket	-	nB

Bild Nr.	EDV Nr.	Bezeichnung Description	Typ 361 MC 250	Typ 362 MC 490	Typ 361 MC 250	Typ 362 MC 490
77	1510	Federring B 6 DIN 128	6	6		
78	2967	Spring ring Stiftschraube	6	5		
79	1734	Stud Scheibe B 8,4 DIN 125	10	5		
80	1670	Washer Sechskantmutter M 8 DIN 934	10	5		
81	1735	Hexagon screw Soheibe B 10,5 DIN 125	-	4		
82	1674	Washer Sechskantmutter M 10 DIN 934	-	4		
83	7470	Hexagon nut Ansaugstutzen	1	-		
7467		Intake flange Ansaugstutzen	-	1		
84	6810	Intake flange Intake flange	2	2		
85	603	Intake flange Zündkerze	1	1		
86	8273	Spark plug Kupplungskorb vollst.	1	-		
87	8274	Clutch housing opl. Kupplungskorb	1	-		
88	1416	Clutch housing Senkriet 6 x 22 DIN 661	6	-		
89	8275	Counter sunk rivet Kupplungsabrad	1	-		
90	8101	Clutch pinion Kupplungskorb vollst.	-	1		
91	8096	Clutch housing opl. Kupplungskorb	-	1		
92	8102	Dämpferelement Rubber cushion	-	6		
93	8094	Kupplungsabrad Kupplungsabrad	-	1		
94	8077	Abdeckblech Cover plate	-	1		
95	1420	Senkriet 6 x 30 DIN 661 Counter sunk rivet	-	6		
96	8276	Innenring Inner ring	1	1		
97	736	Needle cage Nadelkranz	2	2		
98	8277	Distanzscheibe Spacer bush	2	2		
99	8100	Lamellenkörper Clutch body	1	1		
100	8082	Außenlamelle Outer disc	6	6		
101	8083	Innenlamelle Inner disc	5	5		
102	8084	Druckplatte Pressure plate	1	1		
103	8105	Druckschraube Pressure bolt	5	5		
105	8106	Feder Spring	5	-		
8071		Feder Spring	-	5		
106	8278	Sechskantmutter B6 16 x 1 DIN 439 Hexagon nut	1	1		
107	8091	Nadelrolle Needle roller			1	1
108	8087	Kugellager Ball bearing			1	1
109	8089	Druckstange Pressure rod			3	3
110	8072	Scheibe Ø 18 Washer			1	1
111	8092	Sicherungsscheibe Securing washer			1	1
112	8279	Kupplungshebel Clutch lever			1	1
113	8283	Kupplungs-Rückholfeder Clutch return spring			1	1
114	8228	Getriebehauptwelle C 15 Z Main shaft			1	-
115	8306	Getriebehauptwelle F 15 Z Main shaft			-	1
116	8229	Rad 2. Gang auf HW C 18 Z 2nd gear on mainshaft			1	-
117	8307	Rad 2. Gang auf HW F 18 Z 2nd gear on mainshaft			-	1
118	8230	Rad 3. Gang auf HW OD 21 Z 3rd gear on mainshaft			1	-
119	8340	Rad 3. Gang auf HW FL 1 - 21 Z 3rd gear on mainshaft			-	nB
		Rad 3. Gang auf HW FK 21 Z 3rd gear on mainshaft			-	nB
120	8231	Rad 4. Gang auf HW OD 23 Z 4th gear on mainshaft			1	-
121	8452	Rad 4. Gang auf HW FK 23 Z 4th gear on mainshaft			-	nB
		Rad 4. Gang auf HW FL 24 Z 4th gear on mainshaft			-	nB
122	8232	Rad 5. Gang auf HW C 1 - 25 Z 5th gear on mainshaft			1	-
123	8233	Sprengtring SW 21 Circlip			4	-
124	8234	Anlaufscheibe Washer			2	-
125	8235	Sicherungsring A 21 x 1,2 DIN 471 Securing ring			2	2
126	8253	Paßscheibe PS 18 x 25 x 1 DIN 988 Washer			1	-
127	8237	Abtriebswelle Output shaft			1	-
128	8315	Abtriebswelle Output shaft			-	1
129	8238	Rad 1. Gang auf AW C 31 Z 1st gear on output shaft			1	-
130	8316	Rad 1. Gang auf AW F 31 Z 1st gear on output shaft			-	1
131	8239	Rad 2. Gang auf AW CD 29 Z 2nd gear on output shaft			1	-
132	8317	Rad 2. Gang auf AW F 28 Z 2nd gear on output shaft			-	1
133	8240	Rad 3. Gang auf AW C 26 Z 3rd gear on output shaft			1	-
134	8329	Rad 3. Gang auf AW FL 1 - 25 Z 3rd gear on output shaft			-	nB
		Rad 3. Gang auf AW FK 26 Z 3rd gear on output shaft			-	nB
135	8241	Rad 4. Gang auf AW OD 24 Z 4th gear on output shaft			1	-